

# Cottage Docks Pricing Guide (BF)

## **ESTIMATED AVG SQ' PRICING FOR BF DOCKS**

DECKING	PT	WRC
	\$ PER SQ'	
<b>BF 12 BLACK FLOATS</b>		
FULLY BUILT IN THE WATER	28	30
PRE-ASSEMBLED	22	24
RAW KIT	16	18
<b>BF 12 SANDSTONE FLOATS</b>		
FULLY BUILT IN THE WATER	30	32
PRE-ASSEMBLED	23	25
RAW KIT	18	20
<b>RAMPS (INCLUDES FLOAT &amp; HINGES)</b>		
FULLY BUILT IN THE WATER	24	26
PRE-ASSEMBLED	20	22
RAW KIT	15	17
<b>SHOREMOUNT</b>	27	29

## **COMMON ACCESSORIES TO FINISH THE DOCK SYSTEM**

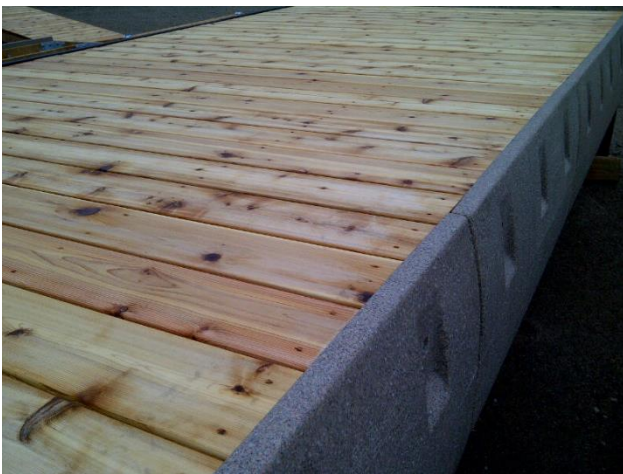
ANCHORING SYSTEM	\$300
DOCK CLEAT x 4	\$140
SANSTONE DL LADDER	\$300
SANSTONE BB 9 BUMPERS (per 4' section)	\$55



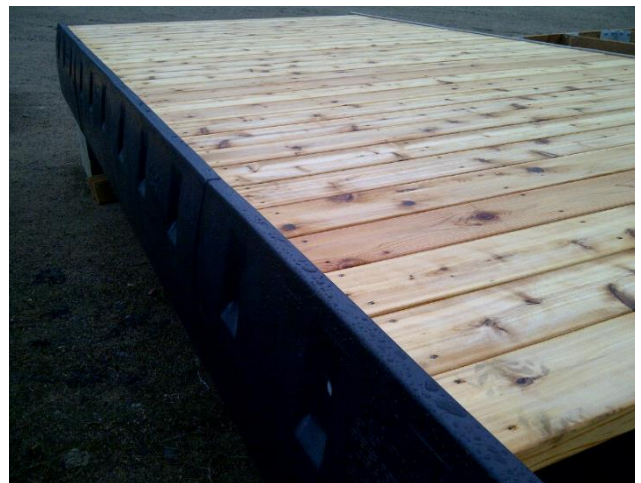
\*PRE-ASSEMBLED is available for docks over 250 square feet only

The above pricing is an accurate representation of our cost and competitiveness in the industry.

**BF-12 Sandstone (SS)**



**BF-12 Black**



**Decided on a system that works within your budget?**

**Please call 1-877-565-0551**

And we will prepare an immediate quote with a first available delivery date.

Or email specifics to [info@cottagedocks.com](mailto:info@cottagedocks.com)

## OUR DOCKS ON THE WATER



For more pictures of our docking systems go to [www.cottagedocks.com/photos](http://www.cottagedocks.com/photos)